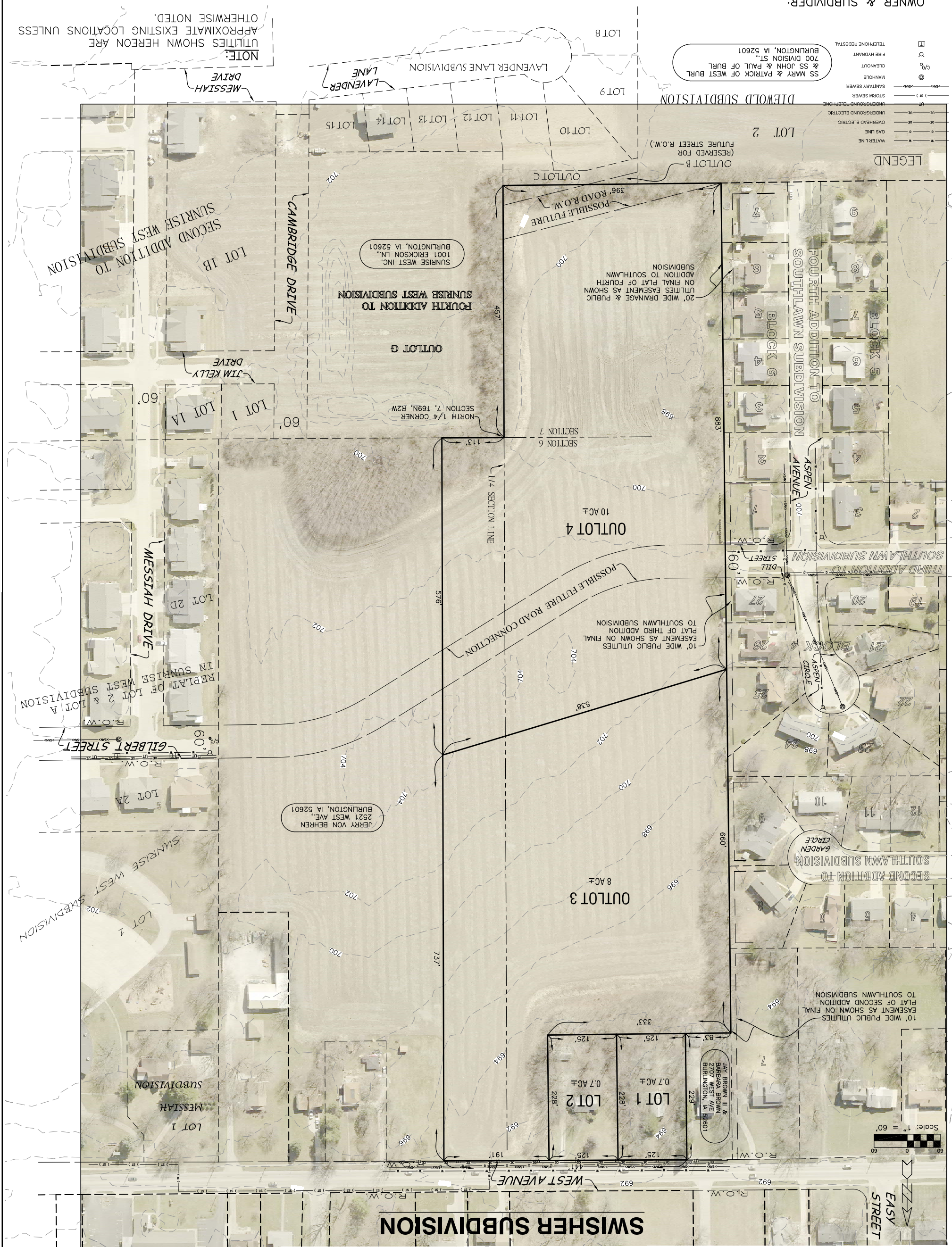


BOOK: 379	PAGE: 1	NO.	REVISIONS:	BY	DATE
DRAWN: AIG			CHECKED:		
KLINGBERG ASSOCIATES P.C. ENGINEERS, ARCHITECTS & SURVEYORS 4109 Park Center Road, Landover, MD 21115 P.O. Box 100, Burlington, IA 52601 Phone: (319) 252-0000 Fax: (319) 252-0013 www.klingberg.com					
PRELIMINARY PLAT NOT INTENDED FOR RECORDING SWISHER SUBDIVISION DRAWING NO. 7401-1 SHEET NO. 17-2044 1 OF 2					

OWNER & SUBVIDER:
 RUTH V. SWISHER REVOCABLE TRUST
 C/O NATE LARSON (STEFFES GROUP)
 605 EAST WINFIELD AVENUE
 MT. PLEASANT, IA 52641



Scale: 1" = 60'

EASY STREET

SWISHER SUBDIVISION

NOTE:
 UTILITIES SHOWN HEREON ARE APPROXIMATE EXISTING LOCATIONS UNLESS OTHERWISE NOTED.